

Week St Mary Magazine



May 2024

Ý waynten, ý vÿs mé, ý blejen an gúcú déth

Booker Farm Services



**Agricultural & Plant Engineering,
Car Repairs,
Mobile Hydraulic Repairs,**

**Farm and Environment
Office Services**

bookerfarmservices@gmail.com

01288 341027

Gregg Anston-Race Glass Art



Bowls/Vessels
Wall Art
Splashbacks
Commissions

**Visit our studio gallery in
Week St. Mary**

www.gregganstonrace.com

The Studio, Corys Cottage,
Week St. Mary, EX22 6UL
01288 341518



Colin's Garage

**CLASSIC, MODERN &
RACE CAR REPAIRS**

SERVICING

MOT TESTING

Colin's Garage
Unit 5 Pethericks Mill
Bude, EX23 8TF

01288 354616

www.colinsgaragebude.co.uk
info@colinsgaragebude.co.uk

C J Blay

Plumbing & Heating

Egloskerry

**GAS SAFE Registered LPG
REFCOM Registered**

Air Conditioning Installations
and Servicing,

Bathroom Installations,

Landlord Safety Certificates.

All Aspects of Plumbing.

Free Estimates.

Tel: 01566-785901
Mob: 07763-457578



Week St Mary Magazine

MAY 2024

Issue No 437

Front Cover Translation: It's Spring, it's May, it's a Bluebell Day



**Saturday
May 11th**

Week St Mary Parish Hall

B I N G O

Doors open at 7:00pm
Eyes Down at 7:30pm

In aid of hall funds.

Parish Hall Committee

Margaret Johns (Chairperson) 07856-357424

Karen Poole (Treasurer)

Rachel Shipton (Secretary)

Jeffery Roberts

Neville Padgham

Carol Slade (Volunteer)

The Parish Hall are always looking for new members to join the committee in helping develop new events for the entire parish to enjoy. If however, you are only able to commit to a limited number of hours during any week rather than a specific role, then please pass on your name and contact details to a committee member to add you to a bank of volunteers that can be called upon as and when required.

Any help will be appreciated.

Lunch Club

WSM Church Lunch Club meets every month in the church for a simple main course and sweet with the opportunity to meet up with local friends and enjoy relaxed company and conversation.

The Lunch Club will meet this month on
Wednesday 15th May.

If you would like to join us, please phone **01288-341221**
by **Sunday 12th**. (Places are limited by space)

CLAIRE & SIMON
NEATE FEET

Foot Care Practitioners

**Foot care in the comfort
of your own home.**

Toenail Clipping
Ingrowing Toenails
Painful Corns Removed
Paddings & Dressings
Verrucae Treatment
Painful Callus
Reduction

**Everything you require to
keep your feet pain free!**

Claire & Simon Neate dipfhp
Qualified Foot Health Practitioners

Call:

07968 232344 / 07870 508867



The Drain Man

BLOCKED DRAINS ?

24 HOUR CALL OUT



North Cornwall

Tel: 07572-338144

HATHA YOGA

IMPROVE:

Breathing
Strength
Balance
Flexibility

LEARN :

to manage stress
& anxiety
sleep well



**Week St Mary
Parish Hall**
Monday evening
7pm – 8.30pm

COST: £6

Contact Denyse Ritz for further details
Phone: 07714261227
Email: denyseritz56@gmail.com

CS & AJ Cobbledick

CARPENTER AND JOINER

Quality Joinery

Made to measure hardwood or
softwood, double glazed windows,
doors, staircases, gates etc



**Whirlwind, Stratton Road,
Bude EX23 8AQ**
01288-356783
07986-996707

cobbledicks1234@tiscali.co.uk
www.csajcobbledickjoinery.co.uk
Follow us on Facebook



KJ BROMELL

Your Local Builders Merchants

Kings Hill Industrial Estate, Bude EX23 8QN
01288 357020

Open to the Trade and Public

Mon–Fri 7.30–5pm, Sat 8–12 noon

For all your building and DIY needs

We stock everything from sand, aggregate and cement to powertools, paints and balustrades.

Come and visit our showrooms where we are happy to design your dream kitchen and bathroom.

Come and see what we have to offer!



DENISE WELLINGTON FUNERAL SERVICES

COMPASSIONATE, CARING, TRUSTED & PROFESSIONAL

Memorials
Pre-Paid Funeral Plans

24 Hour Contact
01288 359277



Dementia
Friends
An Alzheimer's Society initiative

Golden Charter



denisewellingtonfunerals.co.uk
enquiries@denisewellingtonfunerals.co.uk

DB WALLING



Cornish Stone
Wall Specialists

- Dry stone wall repairs
- Retaining dry stone walls
- Stone work with mortared joints
- Earth stone hedging
- Landscaping
- General construction & ground works
- Garden features

FREE QUOTES

Call Dan on

07968 996191



www.dbwalling.co.uk

WALLING | LANDSCAPING | CONSTRUCTION



KEV JOHNS

AGRICULTURAL & PLANT CONTRACTORS LTD 07786-227391



Tree Shear – Cuts, Hold's, Remove's, up to 12' tree's, limbs, bushes, Hedge clearing/ River banks / Lowering High Hedge's etc.

Fast, Efficient, Safe.

(No chain saws/No other staff needed)

Drainage - Drain Jetting/ Tracks / Ponds/ Concreting/ Equestrian Arenas.

All other Swing Shovel work undertaken.

Ploughing- Sub-Soiling /

Power-Harrowing / Cambridge Rolling / Re-seeding & Over-Seeding with 6m Air Seeder

Rear Discharge Muck Spreading

Tanker with or without shallow disk injector Dump Trailers / Loader Work/ Mowing/ Tedding.

Week St Mary Bonaventures WI April Meeting

For the April meeting Members were treated to a talk by local TV celebrity, Tony Rea, who was a finalist in the 9th series of The Great British Sewing Bee (GBSB). Until he was 50 Tony had a stressful job which took him travelling globally, especially in SE Asia, working in production/quality improvements for large well known manufacturing companies. He then felt he needed to take a break and gave himself a gap year.

As a way of fighting boredom on his continual long-haul flights Tony had already started crocheting (security allowed him to take a crochet hook on board but not knitting needles). So, as he now had time to fill, he moved into other forms of needlework including using a sewing machine. As he came to the end of his gap year, needing to find another job, he remembered how much his father had enjoyed being a postman so applied for a job with Bude Post Office – a job he still does today 3 days a week in the centre Of Bude!

During lock-down he made numerous masks which he distributed to local outlets as well as creating and making his own cycling gear and other items for his wardrobe, especially shirts. He was encouraged by his wife to apply for series 9 of the GBSB as they had both enjoyed watching previous series. Having gone through the interview process by telephone and zoom, he then went to Leeds for the sewing tests and ended up as one of the 12 finalists.

It took 8 weeks to film the whole series in Leeds with each episode taking 2 days to film. Filming was done in blocks of 2 episodes with 2/3 days off between blocks. It involved a lot of travelling between Bude and Leeds but competitors were given an apartment in Leeds. Because he was chosen to stay for the whole series, Tony had to make another 10 shirts to wear! Everyone was given the same budget and he made a total of 30 garments in all and found it more of a design challenge than sewing. He had never made any of the garments before apart from a travel bag which was recycled and he still loves





Ground Works and Plant Hire

Foundations | Service Trenches
Drainage | Tracks | Driveways
Landscaping | Garden clearance
Walls | Patios | Fencing

A range of Diggers with operator hire

Including Attachments such as
Flail mower / Hedge Trimmer
Attachment

Suitable to trim up Hedges and mulch
down long grass and thick brambles

Call Frank: 07482 236 084

[Email: fb.groundworks@outlook.com](mailto:fb.groundworks@outlook.com)

R. D. Bolt Builder

House Repairs
Farm Construction
Painting & Decorating
Maintenance, Etc.

Hillside * Week St. Mary

Telephone:

Week St. Mary 341453

ACCOUNTING SERVICES

NEED HELP!?



QUALIFIED ACCOUNTING
TECHNICIAN

TAX RETURNS, BOOK KEEPING,
PAYROLL, V.A.T,
ANNUAL ACCOUNTING
PREPARATION
FOR SOLE TRADERS &
SMALL BUSINESSES

SIAN COURTNEY M.A.A.T

07792 569128

thebridgeys@hotmail.com

OSTEOPATHY

Sport injuries
Back and neck pain
Joint stiffness
Headaches
Babies
Elderly
Pregnancy

Joanne Motsch

REGISTERED OSTEOPATH

Evelyn House

Week St Mary, Nr Bude

EX22 6UP

07795-607914

jo.motsch@yahoo.com

reusing and recycling with zero waste clothing. He came first with garment of the week for children's clothing (see white dress in photograph) and was lucky enough to have the same model throughout the competition.

He described the friendly atmosphere during the filming process with competitors helping each other and with an end of series party to which family members were invited. He still keeps in touch with his series' competitors and with those from other series as well. Also he was invited to the National Television Awards. Since then Tony has had an exhibition at the Castle in Bude and been invited to judge at a Sewing Festival. He is an Ambassador for Brother Sewing Machines and produces shirt patterns for Emporia Sewing Patterns. He has never regretted his change of lifestyle from high-powered job in the far east to his current job as postman.

The date of the next meeting is **Thursday 9th May at 7.00 pm for 7.30 pm start** which will be held in the **Methodist School Room**. The speaker will be Paul Martin who worked on the set of the Doc Martin series, filmed in Port Isaac.

For further details about our WI please contact
Roberta Jones, Secretary, 07788-548875.



WALKING GROUP

After 15 years or so we have decided to disband the Week St Mary Walking Group with effect from the beginning of May.

Over the years we have enjoyed fine local walks, companionship and conversation, lots of coffee as well as recovering from the odd navigational mishap!! Whilst numbers have fluctuated, over the last year or so they have been consistently very low so we are discontinuing scheduled walks on Tuesday mornings. Instead, the remaining group members intend to walk from time from time on an ad hoc basis.

Thank you to all who have taken part.

Stephen Smith



N BARRIBALL



CONSTRUCTION CARPENTRY & DECORATING

Week St Mary

Mobile: 07449 171810

Email: nigel.barriball@btinternet.com

R Mears & Sons Chimney Sweeps & Stove Installation

Established over 30 years
Vac Brush.

Full CCTV investigations.

Pots, Cowlings
& Bird Protection fitted.

Chimneys Lined,
Solid Fuel Appliances,
Rayburns, Woodburners,
Stoves etc. serviced.

Fully insured.

Tel: 01840-261221

Tavistock 01822-664554

Mob: 07737-533392

www.sweepdevon.com

Week St Mary

Community Shop

POST
OFFICE

Spend a little less elsewhere and make a
BIG difference here ...

Daily Essentials:

Bread * Milk * Eggs * Newspapers

- * Post Office Counter Services
- * Local Produce
- * Fruit & Veg, general provisions
- * National Lottery Tickets
- * Licensed to sell Alcohol
- * Dry Cleaning Service

Sunday	10:00 - 12:00	PO CLOSED
Monday	08:00 - 13:00 & 15:00 - 17:00	PO SHOP HRS
Tuesday	08:00 - 13:00 & 15:00 - 17:00	PO SHOP HRS
Wednesday	08:00 - 13:00 & 15:00 - 17:00	PO SHOP HRS
Thursday	08:00 - 13:00 & 15:00 - 17:00	PO SHOP HRS
Friday	08:00 - 13:00 & 15:00 - 17:00	PO SHOP HRS
Saturday	08:00 - 13:00 & 15:00 - 17:00	PO SHOP HRS
Bank Holiday Opening:	10:00 - 12:00	PO CLOSED

Tel: 01288-341230

P & B Interior Design

Curtains - Fabric - Blinds - Nets
Farrow & Ball Paints/Wallpapers
Cushions - Giftware

Ready Made Curtains, Nets, Voiles,
Tracks, Poles in stock



Roller, Vertical, Venetian,
Roman & Velux Blinds



Custom Made Curtain & Blind Service,
Fabric by the Metre, Haberdashery,
DMC Threads

Full Fitting Service Available

Call in and see us
**2, Landsdowne Mews,
Landsdowne Road,
Bude EX23 8BN
Tel: 01288 356303**

Celebrations this Month



Scarlett Connor

**A Very Special 11th Birthday on the 2nd
Quinn Spettigue**

**A Very Happy 6th Birthday on the 12th
Harry Banks**

**A Very Happy 14th Birthday on the 22nd
Eddie Gubbin**

A Very Happy 8th Birthday on the 22nd

Any Birthdays or Anniversaries always welcome.

Please Note

TAMAR Rock & Roll Club

**will not be available in June but will be back on
Saturday 27th July with DJ Dynamite Dave**

LEGO CAFE

This month's Lego Café will be held on Saturday 11th May in the Church. Breakfast is served between 9:30 and 11:30 with Lego until 12pm. Everyone is welcome to join us for Breakfast, Lego building or both. If there is anyone who would occasionally like to help with either setting up or clearing away Lego boxes or with cooking or serving breakfast, please let Linda or Lesley know – call in on the 11th to see what we do (it's not difficult!!) The Lego sessions are free and we have a very large collection of loose Lego and Duplo including Harry Potter, Technical, Vintage, and Star Wars. The optional Breakfast is very reasonably priced and you don't have to play Lego to access it!!

Enquiries to weekstmarychurch@gmail.com



ARTHUR W. BRYANT FUNERAL SERVICE

CAMELFORD BUDE HOLSWORTHY
01840 214891 01288 352282 01409 253000

INDEPENDENT FAMILY
FUNERAL SERVICE

MEMORIAL
MASONRY

OUR FAMILY CARING FOR YOUR
FAMILY FOR OVER 50 YEARS

PRE PAYMENT FUNERAL
PLANS

AWBRYANT.CO.UK
CARING@AWBRYANT.CO.UK



Timberlake,
Week St Mary
01288 - 341326

FOR ALL OF YOUR
AGRICULTURAL ATV, UTV,
MACHINERY SALES &
SERVICE NEEDS

On-Site Shop/Sales Open:
8.00am-5.30pm Mon-Fri
& 8.00am-3.00pm Sat

Selling a wide range of tools,
trailer parts, vehicle batteries,
WD40, Anti-Freeze and other
small maintenance items.



Kevin Lewis Painter & Decorator

20 Years Experience
Internal & External Work
No Job Too Small
Free Quotations Available

3 Week Green
Week St Mary

Tel: 01288 341098
Mob: 07960 380268



Individuals:

- Wills
- Probate
- Lasting Powers of Attorney
- Court of Protection
- Tenancy & Landlord Advice
- Disputes

Business:

- Starting a Business
- Buying/Selling a Business
- Developing Your Business
- Employment Advice
- Landlord Advice
- Disputes

initial hour-long consultation **FREE** of charge with no commitment

Professional-approachable-affordable



www.prolawservices.uk



01288255655



info@prolawservices.uk

Sean Johns Plumbing & Heating



has recently moved out of the village but will continue to provide plumbing services to all customers old & new

**8, Fulmar Road,
Bude, EX23 8FL**



**01288 - 355114
07734 - 087602**



**Curtain and
Upholstery fabrics
Wallpapers
Paints
Poles**

www.merchantandmakers.co.uk
01566 785763

Pop in and see us soon



R & N FUELS Ltd COAL MERCHANTS

LOCAL
DELIVERIES
ALL SOLID
FUELS
COMPETITIVE
PRICES
01840 230111

Foot Health Practitioner

Treating the following in the comfort of your own home.



Toe Nail Cutting
Thickened Toe Nails
Ingrowing Toe Nails

Fungal Nails

Athlete's Foot

Corns & Calluses

Verruca

Neurovascular Assessment



07570-883967

Lynn Goodwin

MAFHP MCFHP

**Parish
Hall
Race**



**Night
Saturday**



May 18th

**Bets from 7pm,
£2 per bet,
First race 7.30pm.**

**Would appreciate anyone who
would like to sponsor a race,
at £20 per race, contact
Margaret on 07856-357424**

Parish Hall
Sunday Roast Lunch



June 9th

12.30pm

Adults £12

School children £6

Under 5's free.

Desserts £3

Bar

Booking to

Margaret



07856-357424

T A M A R

**ROCK & ROLL
CLUB**





THE ROOSTERS - Saturday 25th May

7:30 - 11:30pm
Bridgerule Village Hall
EX22 7DY

Cash Bar
Free Tea/Coffee
Raffle
Clothing Stall

£10 Advance tickets from Jackie, £12 on the door

More info text Jackie on 07533-353388
Email freewayalbus@mail.com
Facebook @ TamarRockandroll

Mon	Tue	Wed	Thu	Fri	Sat	Sun
May 2024		1  	2 Parish Coun Meet see p20	3	4	5 All Age Worship 10:00 see p26, Café Church see p26, Car Treasure Hunt see p23
6 Meet & Eat see p27 EARLY MAY BANK HOLIDAY	7 WSMPG see p29 Adventure Church see p28 	8  	9 Coffee Morning MSR 10:30 to 12:00 noon, WI Meet see p7 	10	11 BINGO see p1 LEGO Café see p9 EAT WHAT YOU WANT DAY	12 Evening Prayer 18:00 see p26 Working Water Mill see p22
13 HMMC see p28 Lost Gardens of Heligan see p22	14 WSMPG see p29 Adventure Church see p28 	15 Lunch Club see p2 	16	17 CAMEO see p29	18 Race Night see p13 Church Gift Day see p25	19 Holy Communion 11:15 see p26
20	21 WSMPG see p29 Adventure Church see p28 	22  	23 Coffee Morning MSR 10:30 to 12:00 noon 	24	25 Tamar Rock & Roll see p15	26 Morning Prayer 10:00 see p26
27 HMMC see p28 SPRING BANK HOLIDAY	28 WSMPG see p29 Adventure Church see p28 	29 NATIONAL BISCUIT DAY 	30 Silent Disco see p11	31	<p>Regular items appear as these symbols on the calendar - PH is Parish Hall, MSR is Methodist School Room, WSMPG is the Play Group, WSMWG is the Walking Group</p>  COFFEE MORNING  MEETING  RUBBISH DAY  MOBILE LIBRARY  RECYCLING DAY  Craft Group MSR	

**Week St. Mary Parish Council
held on Thursday, April 4th 2024**

- 1. Public question time** (15 minutes allowed for this – on matters on the agenda only)
- 2. To receive County Councillor Nicky Chopak’s report on matters arising**
- 3. To note councillors present**
Cllrs C Slade (chair); I Richardson (vice chair); T Hamlyn, M Johns; L Stephens; S Peters; S May; R Bolt and R Shipton. Also in attendance: Cornwall Councillor Nicky Chopak; S Cleave, clerk and five members of the public.
- 4. To receive apologies for absence with reasons**
Cllr S Gubbin – work.
- 5. To receive Declarations of Interest and approve Dispensations**
None.
- 6. To approve the minutes of:**
Councillors approved the minutes of the Ordinary meeting held on Thursday, March 7, 2024.
- 7. To receive clerk’s report on matters arising**
The clerk’s report was noted.
- 8. Planning**
Any late applications received will be discussed under this section

8a. To discuss and make a consultee comment on application:
None.

8b. Decisions

None.

8c. Planning - to note

The following was noted: PA24/00170/PREAPP – Pre-application advice for the re-siting of approved dwelling under permission number PA23/08270. Land south of Burdenwell Cottage, Week St Mary.
24/80

9. Portfolio Reports:

Playground

The swing is being replaced by T K Play. Mole hills are being treated.

Highways, Footpaths & Greens

10. **Correspondence including (all relevant emails forwarded):**

11. **Community Infrastructure Levy and Community Benefit Fund applications**

* None (next round – October)

12. **Agenda items**

Week St Mary path project

No update.

Drainage works quotations

Lambley Corner

Proposed: S May

Seconded: T Hamlyn

Votes: Unanimous 24/88

Social media policy

Ashbury Grove

Canworthy Water solar farm

13. Accounts

Balances March 25, 2024

Current account	£ 2,077.48
Reserve account	£28,641.03

13a. To approve accounts for payment

13b To note income

14. Date of next meeting May 2nd

The meeting closed at 7.40pm

Next Ordinary meeting 2nd May @07:00pm

Suzanne Cleave - 07853-298595 wsmclerk@gmail.com

Bell Tower Cleaning Party

Every few years Week St Mary Bellringers need to clean out the chamber where the bells are hanging because the Jackdaws push their sticks through the bird guards and drop them inside the tower amongst the bells.

Unfortunately, several of the Bellringers are now unable to climb the tower themselves to do this job, and so we have had to ask for help from able bodied people in the community.

We have been very lucky to have had some willing volunteers in the past and the time has come to do the job again particularly because we have some repairs to do to the bells in the near future.

The job involves climbing the tower, picking up and bagging sticks from the floor and sweeping under the bells. There is room for up to 3 people at a time but we actually only have one who is able to do this at the moment. If anyone would like to help out in this way, please contact me and I will explain more and arrange a time for the job to be done.

Grateful thanks

Lesley Booker (Tower Captain) 01288-341221



DSCARE

Professional & Certified
Home Care Services

Deanna Spiby

OUR SERVICES

Assisted living - Independent living
Dementia care - Respite care



07539-663189



deanna@ds-care.co.uk



ds-care.co.uk



Search "DS Care"

**Pilates
Classes**

pilates
North Cornwall

Week St Mary Thurs 09.15 & 10.30
Also at:

Canworthy Water,
Warbstow, Higher Crackington
Launceston, Bodmin, St Kew
On Zoom Weds

What does Pilates do?

- Targets the deep core stabilising muscles
- Improves muscle tone, strength & joint mobility
- Improves posture, alignment & body awareness
- Corrects muscle imbalances & encourages pain-free movement
- Classes are progressive and operate on a

Martin Brooks 07812 959 879

www.northcornwallpilates.co.uk

martin@northcornwallpilates.co.uk

J PARKIN
BUILDING CONTRACTOR

01288 341664

WK ST MARY

Kilburn, Week St Mary,
Holsworthy, Devon
EX22 6UR

Tel/Fax: 01288 - 341664

Mob: 07956 - 466624

email: jparkin664@btinternet.com

**FREE
ESTIMATES**

**NEW BUILDS - EXTENSIONS
BARN CONVERSIONS
RENOVATIONS - PLASTERING
PATIOS - ROOFING
BLOCK WORK - BRICK WORK
STONE WORK**

**YOUR LOCAL
INSURANCE BROKER**

We Search The Market On A
Whole Range Of Products
Including Motor, Home, Business,
Liability, Travel & More!!

HI HODGSON
INSURANCE SERVICES

Chapter House, Burn View, Bude

CALL US TODAY: 01288 353999

www.hodgsoninsurance.co.uk

www.guesthouseinsurance.co.uk

Authorised and regulated by the Financial Conduct Authority



NATIONAL GARDEN SCHEME
Garden Open For Charity

The Bridge Mill

Mill Rd, Bridgerule, Holsworthy,
EX22 7EL

Sunday 2 June

11am - 5pm

Adults £5 Children free

Website: www.thebridgemill.org.uk



More information at ngs.org.uk

THE BRIDGE MILL AT BRIDGERULE

SUNDAY 12TH MAY
2024

11AM - 4PM

ADULTS £5

CHILDREN FREE

WORKING WATER MILL
OPEN FOR NATIONAL MILLS DAY

MAMMOTH PLANT SALE
LAKE AND RIVERSIDE WALKS
WILDFLOWER MEADOWS *LODESTONE MORRIS
STALLS *TOMBOLA *REFRESHMENTS

NO DOGS ADMITTED (EXCEPT GUIDE DOGS)
www.thebridgemill.org.uk

JUBILEE CLUB

The Jubilee Club have organised a Coach Trip to

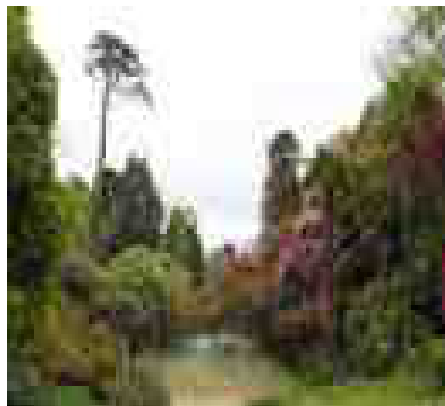
LOST GARDENS OF HELIGAN

on **MONDAY 13TH MAY**

You are very welcome to join us.

Pick up at Wainhouse Corner.

Please contact Diana Hall 01840-261366 for more details



Week St Mary Church

Car Treasure Hunt



Sunday 5th May

Meet in the Square 4pm

Destination unknown!

Barbecue at secret Finish

from 6pm - £10/car

More Change for Microsoft Users

Most Windows users are aware windows 10 will be retired on October 14, 2025 and it has been rumoured Windows 12 will be released at that time also.

OK! I can just hear the gasps of amazement from those who have just spent a fortune buying a new system to accommodate windows 11! and for those thinking of buying a new machine, a delay on that decision maybe be helpful!

Well, here's the current gossip! Windows 12 or possibly Windows 13, Microsoft may just skip a version will be released at the end of 2025, it will display an amended user interface and floating taskbar. Windows 12 will focus more on AI, which is already happening in Windows 11.



There is a plan to create a shortcut to the Bing AI chatbot on the Windows 11 taskbar and the Copilot update for Windows 11 brings AI to photo editing, Paint, Outlook and other Microsoft programs.

Video editing has become a user necessity and AI is an ideal tool to implement it, however older graphics cards and CPU's may not be capable of handling the newer technology.

Microsoft Teams, Skype and Messenger is likely to merge into one Microsoft Messenger app, but all this is yet to be confirmed by Microsoft.

Talking of AI more chat bots have opened up, one such is life2vec where it offers to calculate your life span. The producers claim to be 11% more accurate than ChatGPT with its forecasts, however they do not disclose what figures their results are based on. Therefore, I suspect, it needs a lot more work before it can be considered accurate as does all other chatbots. Don't use the response from a chatbot for anything official, accuracy is seriously lacking.



Phishing for your data is now at epidemic proportions and no one should believe they are free from it, especially those using social media at any level. People believing not banking on line will stop a thief from stealing your money need to think again. As of January 2024, there were 5.35 billion internet users worldwide, amounted to 66.2 percent of the global population. Of this total, 5.04 billion, or 62.3 percent of the world's population, were social media users.

Your data is available to anyone of these users who have a mind to look for it and downloading it is nothing more than basic knowledge to a 1st grade student.

For free telephone advice call Brian Meadows on 01288 381061

Nofix-Nofee Computer Repair Services

Church Gift Day May 18th

Our annual church Gift Day will be held on May 18th between 10.00am and 3.00pm.

Each year we ask for the support of everyone in the Parish as we make the effort to fund the ongoing expenses of running the church, including its £3000 annual insurance bill and the maintenance of the churchyard.

Week St Mary Church is used regularly for many activities which benefit a wide range of people in the community including Happy Memories Memory Café, weekly Adventure Church, monthly Lego café, Lunch Club, Bell ringing and a wide variety of weekly church services. We also host a book exchange and jigsaw library and the church is open every day for prayer and shelter.

This is your opportunity to help in the running of this iconic building either financially or by offering your gifts of time and skill.

We will be providing information about how you can help us in both ways and look forward to meeting as many as possible on the day.

Linda and Lesley, The Churchwardens

Bell Ringing Lessons

There is now an opportunity to learn to ring our church bells. If anyone is interested, please contact me for details or visit the tower on a Wednesday evening between 7.30 and 9.00 when you hear the bells, to see what we get up to.

Bell ringing is a life skill which takes commitment and dedication to learn but which includes making new friends both here and around the country, serves the church in calling people to worship and gives a profound sense of achievement.

You need no special attributes, no musical knowledge, no massive muscles and just need to be reasonably fit and patient!

Lesley Booker 01288 341221

WEEK ST MARY CHAPEL



Chapel Services for **May 2024**

Sun	5th	18:30	Cafe Church, Rev Steve Swann, Holy Communion
Sun	12th	11:00	Morning Worship led by the Worship Team
Sun	19th	11:00	Let's Meet. Shared informal worship led by members
Sun	26th	11:00	Morning Worship led by the Worship Team

We continue to produce weekly printed service sheets available via our website www.weekstmarymethodist.co.uk or from the notice board at the chapel.



Services at St Mary's Church

May 2024

Sun	5 th	10:00	All Age Worship
Sun	12 th	18:00	Evening Prayer
Sun	19 th	11:15	Holy Communion
Sun	26 th	10:00	Morning Prayer

Every Wednesday @ 09:30am there will be a Zoom service of
Morning Prayer

WEEK ST MARY PARISH HALL
100 CLUB



The **April** 100 club winners are:-

1st No 73 Judith Taylor £25

2nd No 34 Mary Devlin £20

3rd No 67 Francis Rowe £10

Membership Renewal is due this month.

New Members welcome!

Thank you for your support

Margaret Johns

07856-357424



MEET AND EAT

Monday 6th May

Tea & Coffee available in a warm space from 11:00.

Soup & Sweet from 12:00 noon in the Parish Hall

*Open to all ages newborn to 100+
come and enjoy some lively helpers & company,
a choice of soups and more importantly
a great choice of desserts.*

Sue Dickenson WSM341016

Linda Cobbledick WSM341468

Sue Dyer WSM341083



Everyone and we mean EVERYONE is most welcome

Happy Memories, Memory Cafe

For people with memory problems, big or small, old or new,
all ages welcome.

Meets at Week St Mary Church 2-4pm on the
second and fourth Monday of every month.

Company, games, chat, memory training, exercises,
nostalgia, music, practical help and signposting support
through Disability Cornwall.

Want more Information? Talk to Sue 01288-341016

ADVENTURE CHURCH

Week St Mary Adventure Church meets every Tuesday
during Term time. We meet in and around Week St Mary
Church at 4:30pm and enjoy a bible or moral story and prayer
followed by fun and adventurous activity before enjoying a
shared meal. All welcome age 5-12, (One adult per family
must also attend please).

Lesley Booker 01288-341221



CRIME REPORTING

To report a crime telephone number **101**
or Email: 101@devonandcornwall.pnn.police.uk

To give anonymous information
Crimestoppers 0800 - 555111



Thought for the Month

Be kind, as what goes around comes around.

Jeanette Turner

Week St Mary Playgroup



Welcomes you

10am - 12 every Tuesday
at Week St Mary Village Hall

Come along and have some fun !



Join coffeepots baby and toddler group on
Facebook or email coffeepotswsm@gmail.com



C A M E O

Come And Meet Each Other

Meeting is Friday 17th May

@2:00pm at the home of Sue & Rob Dickenson

Ranelagh, Stewarts Rod

Everyone most welcome for tea, coffee, biscuit or cake and
an opportunity for a chat.

As ever, transport can easily be arranged but will
people please book with

Sue Dickenson 01288-341016

Look forward to seeing you !

Forthcoming Events

Sunday May 5th

Spring Car Treasure Hunt see p23

Saturday May 11th

Bingo Parish Hall see p1

Monday May 13th

Jubilee Club visit the Lost Gardens of Heligan see p22

Saturday May 18th

Race Night Parish Hall see p13

Saturday May 18th

Church Gift Day in the Church see p25

Sunday June 9th - Sunday Roast Lunch see p14

Saturday June 22nd Pimms & Prosecco at The Tudor House

Saturday July 13th - Bingo Parish Hall

Sunday July 14th Cream Teas at Glanville House

Sunday July 28th - Summer Craft Fayre Parish Hall

Saturday August 10th Safari Supper

Sunday August 18th - Crepes and cider/wine

**Wednesday September 18th - REVEL Produce Show Setup Tuesday Evening in
the Parish Hall**

Friday September 20th - Bingo Parish Hall

Saturday September 21st Revel

Monday September 23rd Harvest Supper in the Church

Sunday September 29th Nankersey Male Voice Choir in the Church

Saturday October 26th - Halloween party

Saturday November 23rd. Christmas Market

Saturday November 30th - Wreath Making Parish Hall

Friday December 6th Mulled Wine at Wentworth House

Saturday December 7th - Christmas Bingo and Draw

Sunday December 8th - Christmas Craft Fayre

Thursday December 12th Johnny Cowling Carols/Christmas Concert

**Friday – Mon December 20th,21st,22nd & 23rd - Christmas Tree festival with
Father Christmas**

Tue Dec 24th Crib Service



Heating, Plumbing and Renewables

- Oil Boiler Servicing, Repairs & Installations
- General Plumbing/Hot Water Cylinders
- Heating Installations & Repairs
- Heat Pumps & Biomass
- Boiler Installation

01288-381530

flowtechheating@yahoo.co.uk

www.flowtechheating.co.uk



SOLICITORS

Providing legal services to individuals and businesses across the South West

Launceston Office: 01566 772451

www.wbw.co.uk

IzzyB Nails Nail Technician

I am a Nail Technician specialising in natural nails. I have a tranquil home salon in Week St Mary and am passionate about looking after the health of your natural nails so exclusively use CND Shellac – a zero damage gel polish.

Flexible working hours to suit your needs.

Tracyann Hutchins

07751-094209

Stoneleigh, Week St Mary,
Cornwall, EX22 6XA

email: info@izzyb.co.uk

www.facebook.com/izzybnails

Website: www.izzyb.co.uk
www.instagram.com/izzybnails

Nofix-Nofee

Low Cost Computer Repair Service

- * Free Estimates and Advice
- * No Call out Charge
- * Virus Infection Resolve
- * System Restore
- * New System Installation
- * Refurbished Laptops & PCs
- * Free Adware/PC Doctor Software
- * Hourly Rate & Fixed Fee
- * Onsite Fix & Repairs

Computer Repairs from only £25



Tel: 01288 381061
Mobile: 07534 804101
mail@nofix-nofee.net

WEEK ST MARY PARISH COUNCIL MEMBERS AND RESPONSIBILITIES

Parish Council Chair:	Mrs C Slade	WSM 341350
Vice Chair:	Mr I Richardson	07379-29231
Finance:	Mr S Peters	WSM 341578
	Mr I Richardson	07379-29231
Parish Clerk:	Suzanne Cleave	07853-298595
Highways, Streetlights & Trees:	Mr T Hamlyn	07896-738521
Public Conveniences:	Parish Clerk	
Parish Greens:	Mr T Hamlyn	07896-738521
Parish Office:	Clerk	
Jacobstow Primary School:	Clerk	
Playing Field	Mr T Hamlyn	07896-738521
	Mrs C Slade	WSM 341350
	Mrs M Johns	07856-357424
	Mr S Gubbin	07988-861613
	Mr S Peters	WSM 341578
Planning:	Mr I Richardson	07379-29231
	Mrs J Pearce	WSM 341525
Defibrillator	Mr R Bolt	07813-949832
	Miss R Shipton	07792-258665
	Ms L Stephens	07831-404604
Non Council members		
Footpaths & Back Lane (Public Rights of Way):	Mr P Dorren	WSM 341117

MAGAZINE ENTRY DATES

The last date for entries to the Magazine is **22nd of the month**
Please get your copy to the editor or the shop, preferably on disc or as
e-mail. Handwritten pieces are fine too but if you use a computer,
please help by producing paperless words!!

MAGAZINE MEMBERS

Magazine Editor	Mr Dick Sowerby	WSM 341348
e-mail	<i>editor@weekstmaryvillage.co.uk</i>	
Advertisements	Mr Dick Sowerby	WSM 341348
Magazine Design	Mr Terry Edwards	WSM 341083
Distribution & Holiday Let copies	Mr Michael & Mrs Shelley Collman	WSM 341649

redsmart PRINTING

UNIT 2, WAYSIDE WORKSHOPS
KILKHAMPTON, BUDE EX23 9RB
with FREE deliveries and
collections in Bude & Stratton

TEL: 01288 358071 EMAIL: sales@redsmart.co.uk

 [redsmartprinting](https://www.facebook.com/redsmartprinting)

Cards Banners Flyers Labels

Letterheads • Brochures • Programmes • Calendars • Posters
Indoor & Outdoor Signage • Forms • Large Format • Canvases
NCR Pads • Desk Pads • Menus • Service Sheets *and more*

up to A0 printing for your plan, poster, photo and art files

FINE ART & PHOTOGRAPHIC GICLÉE PRINTING

IN-HOUSE, HIGH QUALITY
COTTON BLEND CANVAS PRINTS



FINE ART
PAPERS:

Gloss
Satin
Matt
Smooth Art
Textured Art
Lustre



IN-HOUSE
MOUNTING & FRAMING



NEW

We can convert your original art into a high quality digital file ready for prints, canvases, cards and other items with our new **FINE ART FLATBED SCANNING SERVICE UP TO A2+**

PERSONALISED PHOTO GIFTS:

Mugs, Coasters, Mouse Mats, Plaques,
Money Boxes, Bags, Photo Panels and more!

PERSONALISED WALL ART:

Shapes, Bespoke Families, Effects and more!

OTHER SERVICES:

Photocopying / File Printing / Scanning
Guillotining / Laminating / Binding
VHS to DVD & USB / Vinyl to CD
Bespoke Computer Systems & more

PHOTO EDITING and PAGE LAYOUT/LOGO DESIGN

WEEK ST MARY DIRECTORY

Parish Council Chair:	Mrs C Slade	WSM 341350
Parish Clerk:	Suzanne Cleave	07853-298595
Email:	wsmclerk@gmail.com	
Parish Hall Chairman:	Mrs Margaret Johns	07856-357424
Parish Hall Bookings:	Ms Brenda Jennings	01288-341429
	dippyfish@btinternet.com	
County Councillor:	Nicky Chopak	07810-302061
Email:	nickychopak@gmail.com	
<u>SITA Recycling Centre:</u>	Tiscott Wood	01288-355131
	9:00am - 4:00pm	
	7 days a week except	
	Christmas Day, Boxing Day and New Years Day	

Doctor's Surgeries (Appointments)

Ruby Country Medical Group (Stratton)	01288-352133
Ruby Country Medical Group (Holsworthy & Hatherleigh)	01409-253692
Neetside	01288-270580

Buses: Plymouth City Bus (colour Red) 01752-662271

WSM Transport Rep

(Launceston Mon & Thurs 09:38am Ret 12:50pm from TESCO)

Launceston Tue 09:38am Ret 12:30pm from TESCO

Holsworthy Wed 09:38am Ret 13:07pm - Bude Friday 09:38am Ret 13:01pm)

Women's Institute:

President:	Mrs Sue Dickenson	WSM 341016
Secretary:	Mrs Roberta Jones	07788-548875

National Child Line: 0800 1111

Diocesan Safeguarding Officer for Children and Vulnerable Adults

Mrs Sue Dickenson WSM 341016

Mobile Library: The Square, Week St Mary 11:50am-12:10pm
Check calendar for monthly dates.

Football Club: Mr Antony Sachs WSM 341090

Parish Church: Contact Church Wardens on weekstmarychurch@gmail.com

Lesley Booker WSM 341221

Linda Cobbledick WSM341468

Methodist Church: Rev Steve Swann 01840-779339

(Service times for both churches inside Magazine)